







**green**  
Calming and muted. These soft and sweet blue-green hues are both refreshing and revitalizing.





**red**  
A rich and bold hue that catches the eye. Think crimson, scarlet and ruby. Add a splash of red for a dramatic appeal.





**black + white**

A classy and sophisticated color duo that lends itself to a variety of subject matter and styles.





**blue**

Classic and timeless. These inky blue hues make a bold statement with a touch of sophistication. Pair with white to create a balanced contemporary look.





**brights**

Vibrant and full of energy. Be loud and make a statement. Add some pop and pizazz with this fun color palette.





**neutrals**

A subdued color palette including both warm and cool tones. Think taupe, beige and grey. It's comfortable and cozy.

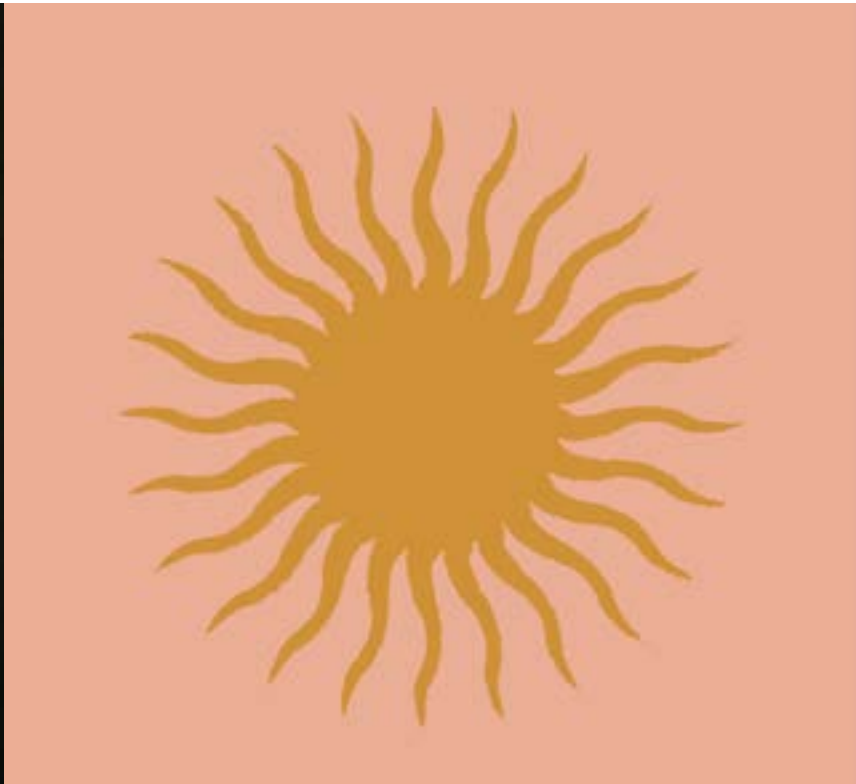
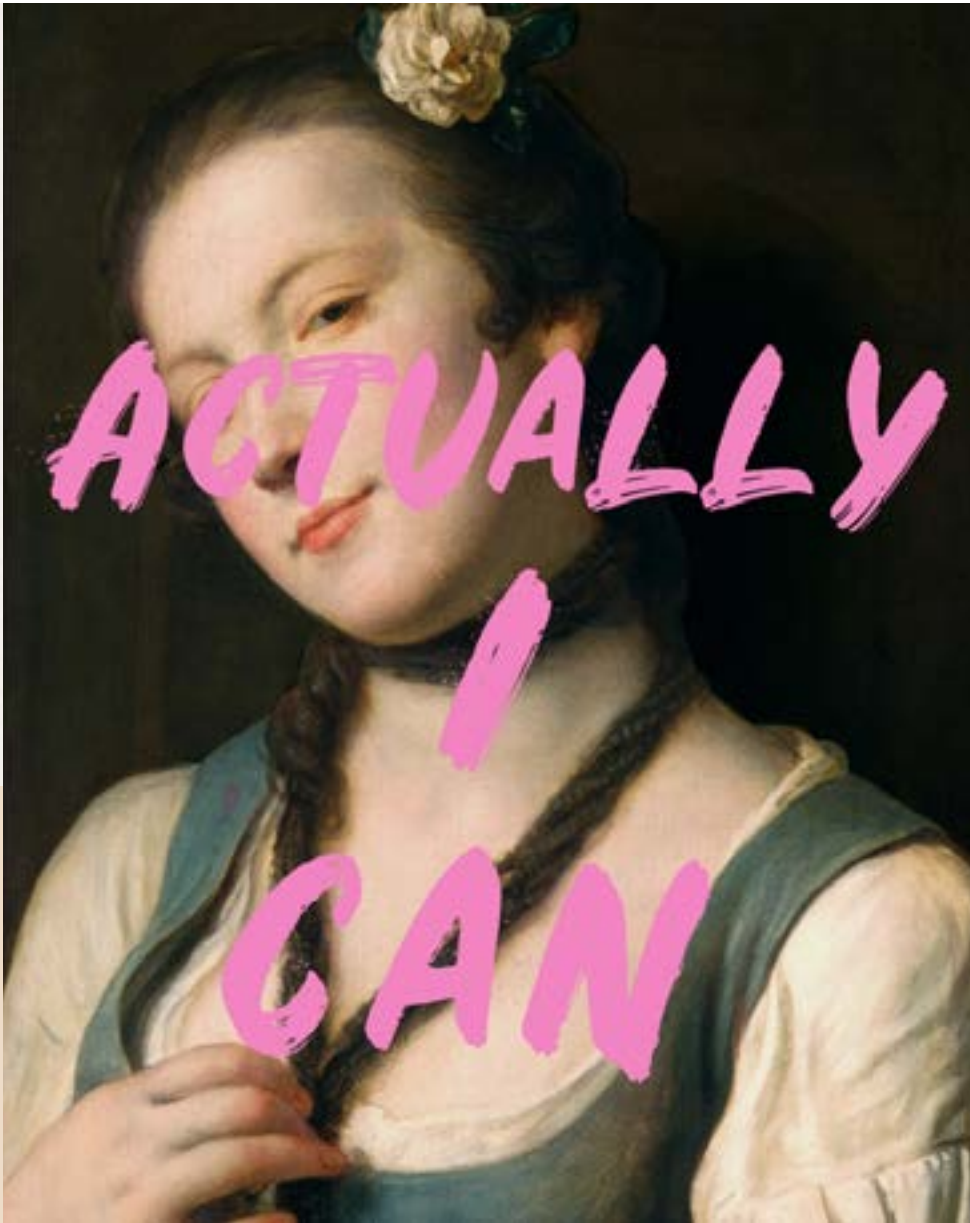




**pastels**

Serene and calming. This whimsical color palette is both delicate and sweet. Keep it light and airy.





**pink**  
A delicate hue that is soft and sweet. Balance with neutrals to create a softer, more sophisticated look.





**turquoise + teal**

Bright blue-green hues that are both stunning and elegant. A free-flowing color palette reminiscent of natural water sources.





**yellow**

An energetic hue that is rich and mature. Think ochre, mustard and honey. It's radiating and warm.

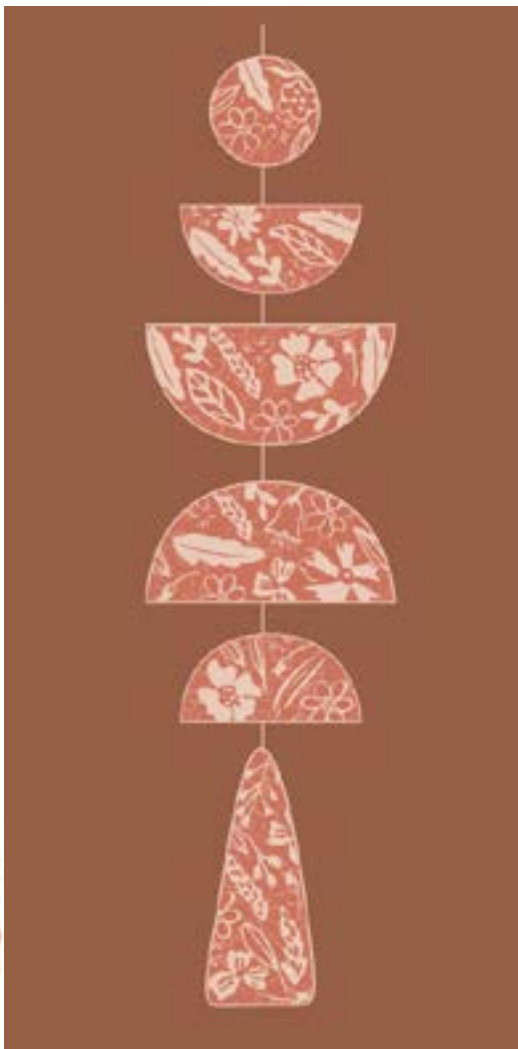




**spice**

Warm red-brown hues with an earthy aesthetic. These sweet spice tones are grounding and evoke a sense of comfort.





**orange**

A rich and vibrant hue. Think mandarin, pumpkin and persimmon. Blend with softer neutral colors to create a balanced modern feel.